






Attachment 1

	A	B	C	D	E	F	G
1	SOURCE NAME	TO TRIBUTARY	TOWNSHIP	RANGE	SECTION	QQ	SURVEY CODE AND NUMBER
2	Unnamed Stream	Yellowbanks Creek	51N	03W	24	NESE	
3	Unnamed Stream	Yellowbanks Creek	51N	03W	24	SENE	
4	Unnamed Stream	Yellowbanks Creek	51N	03W	24	SWNE	

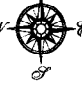

Attachment 2
Place of Use Map Fire Suppression - Water Right No. 95-17401F
National Forests in Idaho and the Kaniksu, Lolo and Kootenai NF in Montana

Key to Features

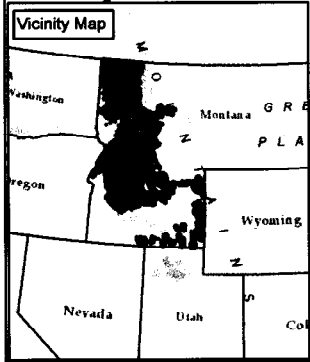
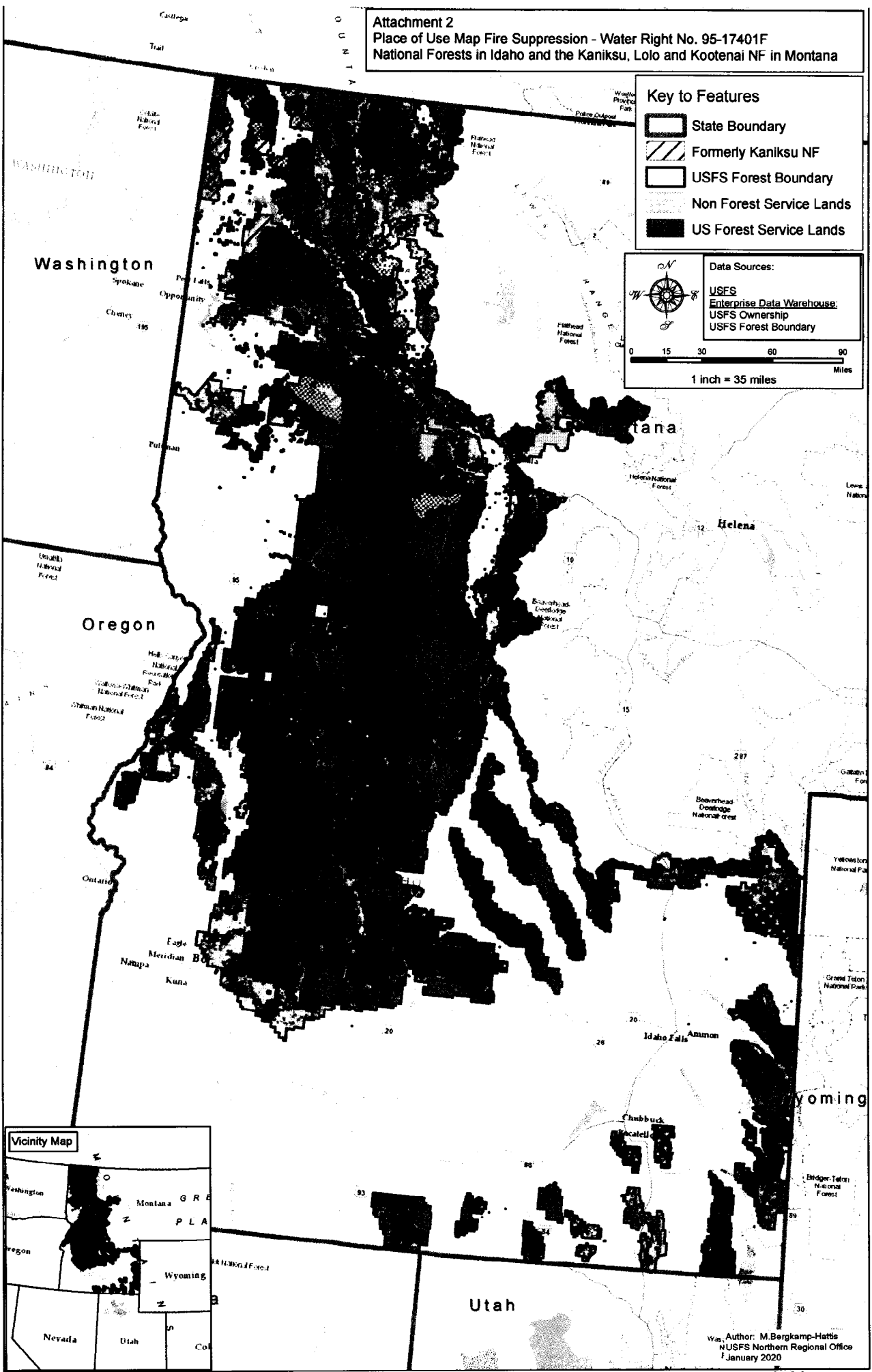
-  State Boundary
-  Formerly Kaniksu NF
-  USFS Forest Boundary
-  Non Forest Service Lands
-  US Forest Service Lands

Data Sources:

- USFS
- Enterprise Data Warehouse
- USFS Ownership
- USFS Forest Boundary

1 inch = 35 miles



Author: M. Bergkamp-Hattis
 NUSFS Northern Regional Office
 January 2020